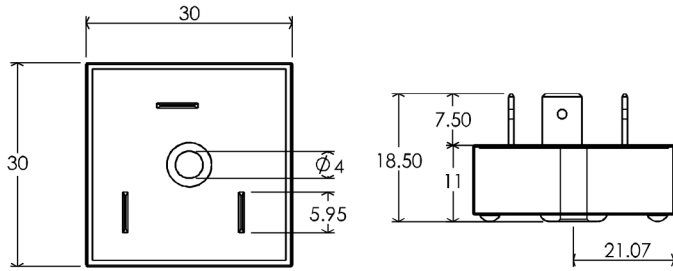


ELECTRONIC CENTRIFUGAL SWITCHES FOR CAPACITOR START (& RUN) INDUCTION MOTORS

ECS 125P



MODEL CHART

Switching part	Motor ratings		
	Hp	Aux. coil rating volt	Pole
T2535-800G	0.5~3.0Hp	100 ~ 120 VAC	2,4,6

* These models are designed for both capacitor start motors and two (start + run) capacitors motors. For motor operating voltage of 220VAC, Please refer to typical wiring diagram of this datasheet.

ELECTRICAL CHARACTERISTICS (TYPICAL RATINGS OTHER THAN SPECIFIED)

Parameter	ECS125P	Unit
Non repetitive peak current @ half cycle, 50/60Hz	250	A
Thermal impedance @ 7.4sec, 25A	2.1	°C/W
Switch-on delay time @ 50/60Hz	2	cycle
*Discharge resistor	12	KΩ
**Forced switch-off locked rotor time	60Hz: 7.4 50Hz: 8.8	sec
**Maximum Number of successive restarts	9	-
Forced switch-off starting coil voltage	200 ~ 250	V
Line voltage, VL	100 ~ 120	V
Dielectric strength, between case and pins	>2500	VDC
Insulation resistance, between case and pins	>10	MΩ
Ambient air temperature	-20 ~ 60	°C

* For frequent(high duty)restarts, it is recommended to connect an additional resistor in parallel with starting capacitor.

**These can be initialized by either power interruptions or successful motor run states.

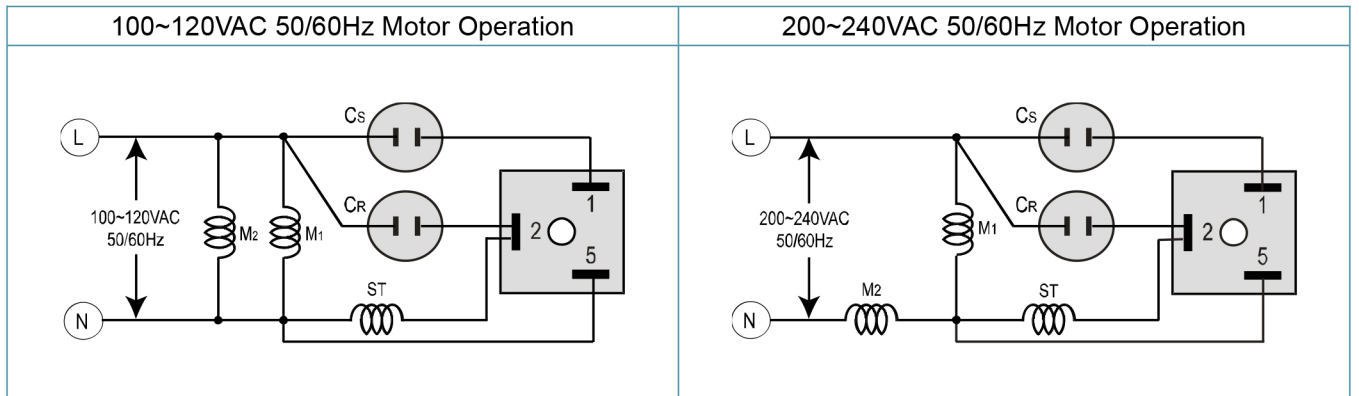
CERTIFICATION



IEC/ EN 60730-1(Automatic electrical controls for household and similar use)

IEC/ EN 60730-2-10(particular requirements for motor-starting relays)

TYPICAL WIRING



Cs : Starting Capacitor, CR : Run Capacitor , M₁,M₂ : Main Coil , ST : Starting Coil